

Functional Eligibility Criteria for Office of Developmental Programs (ODP) Waivers and Programs

Pennsylvania's Office of Developmental Programs (ODP) offers waiver programs for people who need extra support to live and work in their communities. In order to qualify for the ODP programs (P/FDS, Adult Autism Waiver, Adult Community Autism Program Program Consolidated, and Community Living Waivers), you need to:

- 1 have a diagnosis of an intellectual disability (ID) or autism from a qualified professional (*children under age 8 can also qualify with a diagnosis of a developmental disability*),
- 2 meet financial eligibility, and
- 3 meet functional eligibility.

This resource will help you understand what functional eligibility is and how it is measured.

To learn more about what a waiver is, who can apply for waivers, and what waivers are available for people in Pennsylvania, visit www.paautism.org/waiver.

What is functional eligibility?

To be eligible for waiver services, a person has to show that they need a certain level of support in order to live and work in the community. The level of support is measured by having substantial limitations in 3 or more major life activities:



Self-care



Understanding and use of receptive and expressive language



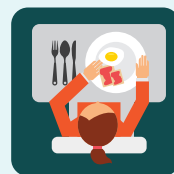
Learning



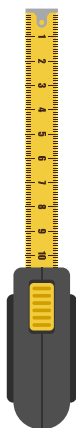
Mobility



Self-direction



Capacity for independent living



How is functional eligibility measured?

Functional eligibility for the ODP waivers is measured when you apply for waiver services at your county Mental Health/Intellectual Disability (MH/ID) Office. The MH/ID office will determine functional eligibility by using an **adaptive functioning assessment**. There are two adaptive functioning assessments that counties use: the **Vineland Adaptive Behavior Scale** and the **Adaptive Behavior Assessment System (ABAS)**.



How can I get an adaptive functioning assessment?

If you or your family member has a recent Vineland or ABAS, you may be able to share that with your county MH/ID office. They will use those results to determine if you or your family member meet functional eligibility requirements for the ODP waivers.

If you do not have a recent Vineland or ABAS, you can call your County MH/ID to help you find out where you or your family member can get one of these assessments. If you or your family member are still in school, you may be able to get one of these assessments done by the school psychologist.



To find your County MH/ID office visit: www.paautism.org/MHID. You should also call your County MH/ID to make sure you get the right documentation.

For more information about functional eligibility, you can contact your County MH/ID Office or the ASERT Resource Center (1-877-231-4244 or info@paautism.org).



Pennsylvania's leading source of autism-related resources and information.

877-231-4244

The ASERT Collaborative is funded by the Office of Developmental Programs, PA Department of Human Services.