

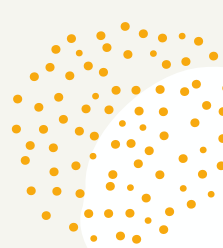
**A CONVERSATION WITH
MAGELLAN - PART 2:**

*Understanding Dual Diagnosis and
Behavioral Health Services*

October 20, 2021 | 6:30 - 8:30PM EST

Guest Presenters: **Danielle Dolena & Kristen Scalise,**
Magellan Behavioral Health of Pennsylvania

This webinar will provide a general overview of dual diagnosis, how to get help for someone with a dual diagnosis as well as the different treatment services that are available. Additional topics will highlight cross-system resources. There will also be an opportunity for questions and answers.



THIS WEBINAR WILL COVER:

- Overview of Magellan
- Overview of Dual Diagnosis
- Finding help/treatment for someone with a dual diagnosis
- Resources beyond Magellan

Register Online: [**bit.ly/ArcLNevents**](https://bit.ly/ArcLNevents)

Questions? Contact
Kodi Berry at kberry@arcoflehighnorthampton.org